

STUDENT GUIDE 2019



120NNEVA

120.itmo.ru



120N

ITMO UNIVERSITY

ITMO University is 120 years old!

This year, we are celebrating our 120 years
of progress and achievements!

Lots of fun events await, culminating
in a grandiose graduation party to take
place at Sibur Arena on June 27, 2020 –
so save the date!

Welcome to ITMO.FAMILY!



Rector's Welcome

Hello! My name is Vladimir Vasilyev, and I'm the Rector of ITMO University.

Don't be surprised if you see me hopping off my bicycle excited for another working day to start, sporting a magician's outfit, or in a Darth Vader mask with a lightsaber in hand come exams time: as everyone in our large and friendly ITMO.FAMILY, I'm a fan of Star Wars.

So, on behalf of me to you: may the Force be with you and the warmest of all welcomes to ITMO University!



First Vice Rector's Welcome

Dear International Student,
Welcome to ITMO University! We are glad that you have joined or will be joining us at ITMO University and we hope that your stay in St. Petersburg will be filled with exciting opportunities and unforgettable memories.

To help you take full advantage of your experience at ITMO University, we have compiled this Guide to provide you with practical information that you will need before your arrival and during your stay in St. Petersburg.

We wish you good luck with your studies at ITMO University, and hope that you will enjoy your stay in St. Petersburg!

Table of Contents



ITMO is More than a University!	10
At a Glance	12
Student Office	16
Campus map	18
Campus card	20
International Office	22
Welcome to St. Petersburg!	24
Housing	26
Student travel card	26
ISU	29
Class schedule	30

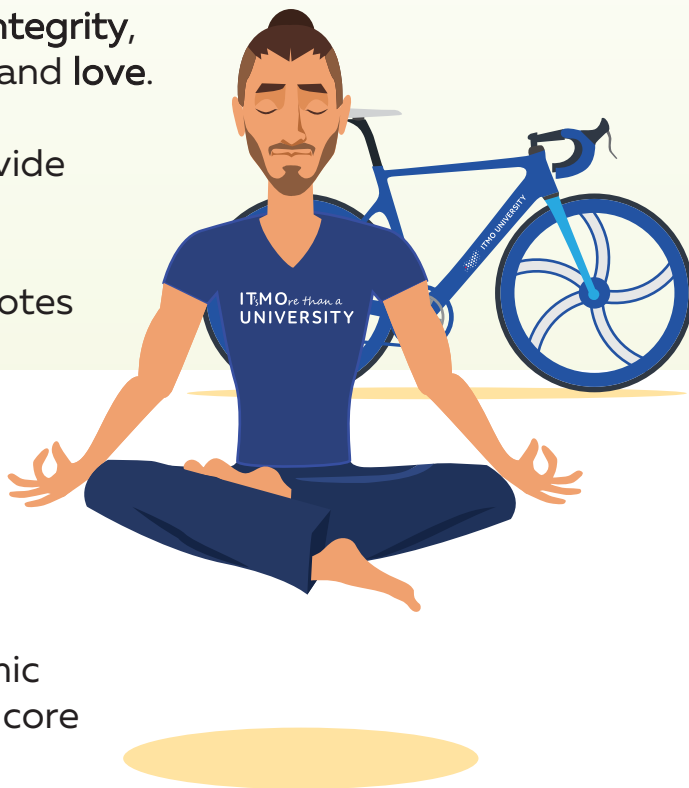


Medical aid	31
Mental health support	32
Student life	33
Sports	34
KronBars	37
Entrepreneurship	39
Museum of Optics	42
Yagodnoe Sports and Recreation Center	43
Career development	44
ITMO International	46
Stay in touch	47

ITMO is More than a University!

ITMO University builds on the values of **respect for the individual, integrity, academic freedom, openness and love.**

In line with our mission to provide opportunities for the **holistic development of individuals**, our educational process promotes student agency, blends fundamental and unique competencies and also recognizes the importance of professional and soft skills, which is a completely new area for Russian universities. Starting in 2018-2019 academic year, **soft skills** are part of the core curriculum at ITMO.



Respect for the Individual

We appreciate individuality, and try to see the unique traits in every person and help them grow and learn through providing opportunities for personal development and fulfilling their potential.

Integrity

We are honest to ourselves, our work, the University, our colleagues and the students. The reputation of the University and its values are more important than personal gain.

Academic Freedom

We have the freedom to exchange information, to choose, to implement our own ideas and personal plans while being aware and responsible for the consequences of our actions.

Openness

We are open to new ideas and people; we welcome change and are open to dialogue and collaboration.

Love

We love what we do, we want to and are ready to change the world around us for the better.

At a Glance



RUSSIAN ACADEMIC
EXCELLENCE PROJECT

among project
leaders



11,125

student body



6,350

Bachelor's degree
students



4,775

Master's degree
students



1,810

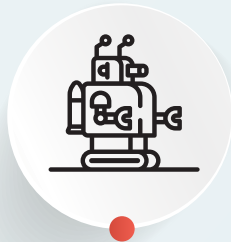
foreign students
from 82 countries



Our Top Research Fields



**IT and Information
Security**



**Smart Technologies
and Robotics**



**Photonics
and Quantum
Communications**



**Life Sciences
and Translational
Medicine**



**Natural Sciences
and "Smart Materials"**

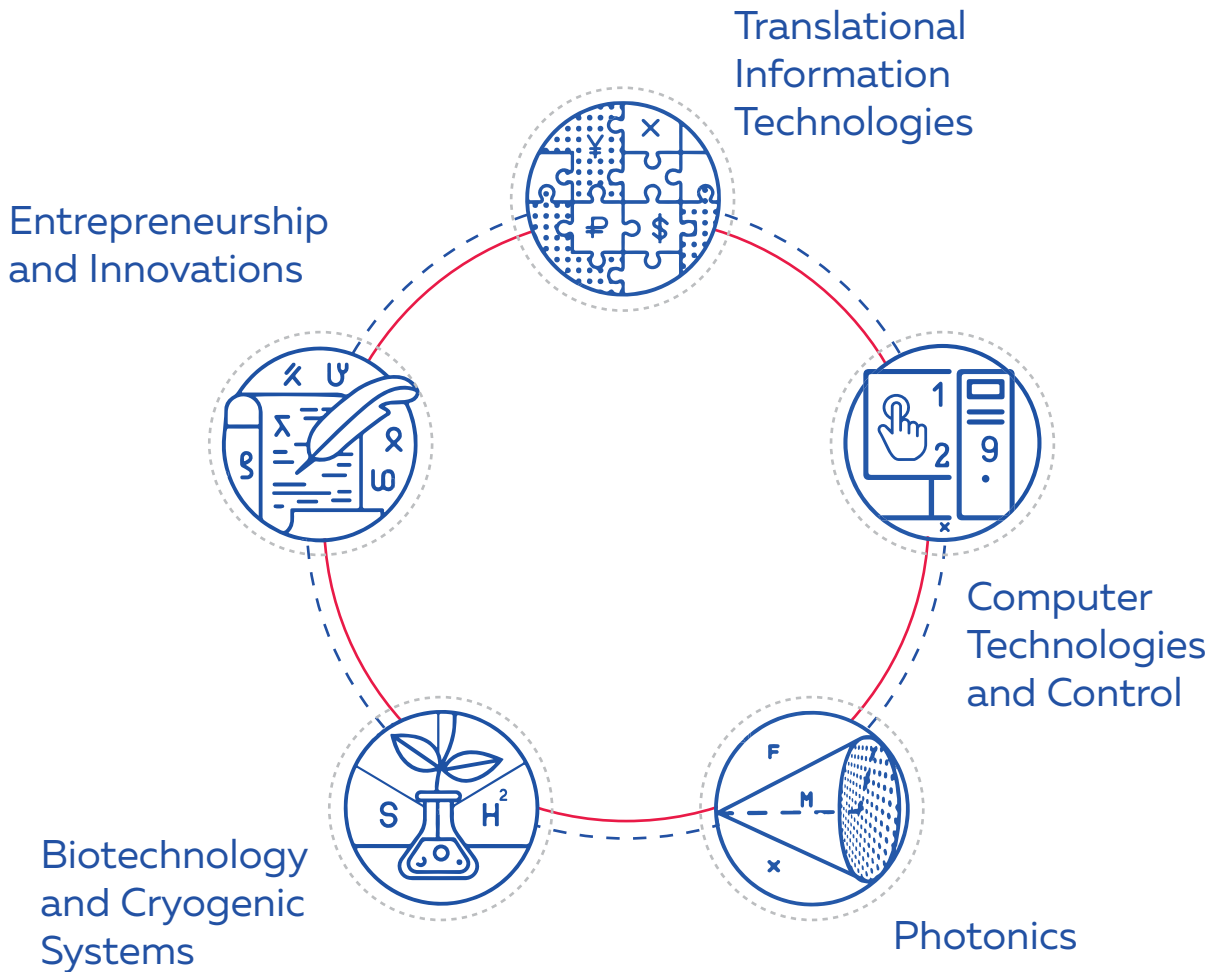


**Art & Science
and Lighting
Design**



**Ecology
and Urban Science**

Our Top Majors





Student Office: always there for you!

Student Office is your go-to place for any kind of help at ITMO University. Thanks to our online services, you can apply for various official documents such as enrollment certificates, transcripts of records, and many others. After your application has been processed, you'll get a notification with invitation to collect the document needed.

There are situations when you need to provide the original of a document or your signature. Just come to the Student Office if you want to:

- prolong/change your student card;
- change your personal information;
- prolong your exams when necessary;
- apply for academic mobility/ academic leave/ transfer/ readmission/ expulsion;
- retrieve your education documents (certificates or diplomas) for a temporary period of time.



Breaking: you are the first megastudent to have an electronic gradebook!

There goes the worry of losing your gradebook or forgetting to bring it to an exam. All of your grades will now be available on your personal page in ISU!

Other issues we can help you with include:

- scholarships and material support;
- tuition fees;
- educational process;
- getting a place in a dormitory/relocation.

Do you have a question but don't know who to ask?
We're always there for you!

Campus map





ITMO.FAMILY campus card

Your ITMO.FAMILY campus card is your personalized key to ITMO's campuses, services and processes.

An ITMO University's innovation that will only advance in its functionality, the card will allow you to:

- access the university's campuses and dormitories;
- obtain books in the university's libraries with no library card needed;
- get discounts and bonuses in ITMO.STORE, university canteen, partner stores and many more.

Keep your eyes  peeled!

We will announce the launch of new services via ITMO's Intranet system, ISU. Feel free to suggest new services for the ITMO.FAMILY campus cards by writing to card@itmo.ru or calling (812) 607-03-94 (ext. 4008)!



How to get an ITMO.FAMILY campus card?



To get your personalized ITMO.FAMILY campus card, you will need your passport and student ID.

The card can be obtained at the Bank Saint Petersburg's **Primorsky office** (Chkalovskaya metro station, Bolshaya Zelenina St. 8 bld. 2).

The office's card hand-out schedule is available here: <http://clck.ru/EErhC>

If you lose your card, immediately contact the bank's **support desk** for the lost card to be blocked and a new one to be ordered. Then, on the next working day, head to one of ITMO's Access Control Offices to obtain a temporary pass to access the university while your new ITMO.FAMILY card is being made.

ITMO's Access Control Offices can be found at the following addresses:

Kronverksky Pr. 49, room 161, tel. (812) 498-10-19, +7 911 096-60-90;
Lomonosova St. 9, room 1103, tel. +7 905 223-85-77.

The Access Control Offices' working hours are: Mon.-Th. 10am-1pm, 2pm-5pm;
Fri. 10am-3pm.

Please write to agbalyura@itmo.ru or call (812) 993-55-23 for any questions regarding accessing the university buildings.

International Office

ITMO International Office's mission is to enhance academic experience of international students by providing the highest levels of knowledge and expertise in consultations, immigration services and administrative support. We are always glad to see you and help you with any queries you may have!



Key services include:

Migration Services Office

Lomonosova St. 9, room 2139d
+ 7 (812) 315-05-21
dsnekrasova@itmo.ru

International Students Learning and Support Center

Lomonosova St. 9, room 2139 b
+7 (812) 314-77-75
int.students@itmo.ru

International Educational Programs Department

Lomonosova St. 9, room 2139c
+7 (812) 457-17-90
international@itmo.ru

You can read about
ITMO International Office's
Departments in more detail
on int.itmo.ru/en



Welcome to St. Petersburg!

Known to be the cultural capital of Russia, St. Petersburg abounds with [museums](#), [theaters](#), [opera houses](#) and [music halls](#) for you to attend, and [architectural gems](#) for you to see.

Even the most blasé culture connoisseurs will find something to do, as demonstrated by our [Unexplored St. Petersburg](#) series. Refer to the [Experience SPb](#) section on ITMO University's English news website, [ITMO.NEWS](#), for more information. ITMO.NEWS also publishes [weekend guides](#) with all the exciting events happening in St. Petersburg.




Weather. Russia may have a bad rep for its weather, but it's not as cold as is widely assumed. Seasons are very even, in that it's hot in summer, rainy in autumn and chilly in winter, so a couple of extras in the form of a warm coat, warm boots, and umbrella will be enough to have all bases covered.

Relocation. Moving to a new city can sure seem nerve-wracking, but don't you worry: we have developed a range of [comprehensive guides](#) to make your relocation experience a success.

Transport. Public transport in St. Petersburg works very smoothly. There are buses, metro, trams, and trolleybuses. As a student, you can get a student travel card, which works for all types of public transport. Please refer to the Travel Card section of this Guide.

Food. St. Petersburg has a lot of great eateries to suit all tastes and dietary needs. Here are the ITMO.NEWS editorial team's personal recommendations:

- vegan and vegetarian [restaurants](#) and [cafes](#);
- [general](#) and [local](#) cuisine.

 Please note that tap water is not drinkable in Russia but bottled mineral water is cheap and widely available.

Housing: home, sweet home!

ITMO University has more than 10 dorm options on offer, and it is our priority to provide international students with housing. All of our dorms are located in close proximity to St. Petersburg metro stations, so getting to the university won't be a problem.

Welcome to your new home! Good company is guaranteed.

Learn more about ITMO University dorms on [ITMO International](#) and in a [special article](#) on ITMO.NEWS.

Student travel card*

** Available for full-time students only*

Don't forget to get your student travel card!

From September 1 to November 30, you can use a temporary travel pass, which doesn't have your photo on it. You can purchase and extend it at any metro ticket office.

Important: your temporary travel card will expire on December 1.

What should you do next?

Just buy a permanent one! It has your picture on it and can be purchased in several places:

- in a metro ticket office (it takes 10 days to make, you can receive your card at the station where you submitted your application);
- at the Personalization Department of CJSC Transkard at [Chernoretskiy Pereulok 3](#) (you'll get your card immediately);
- on [карта-онлайн.рф](#) (10 days, you'll receive your card at the station you note in your application).

Ordering your personal travel card will cost you 250 rubles.

Once ready, it will cover most types of transport such as metro, trams, trolleybuses, and buses.



You snooze, you lose! Make sure you get a permanent travel card until December 1 before your temporary one runs out.

Documents you will need:

- passport / ID card;
- student ID;
- temporary travel card if you have one;
- your photo* (dimensions 3x4): printed out for the metro ticket office, electronic for the website.

** You won't need a photo if you apply via the personalization office.*



ISU: One system, endless opportunities

ISU is the university's internal information system. You can look up your curriculum or class times, arrange a meeting with your tutor, request documents, keep track of your grades and accomplishments, and get the latest on various grants, scholarships, and contests – and that's just some of it!

Features

- **Portfolio.** Here you'll find the information about your curriculum and the various grants and scholarships you can apply for.
- **Requests.** This application lets you request various documents and certificates online.
- **Application templates.** Here you'll find all the necessary templates for various applications related to transfers, academic mobility, and more.
- **Educational material.** This section contains tasks for lab and course assignments, useful subject notes and other handy materials.

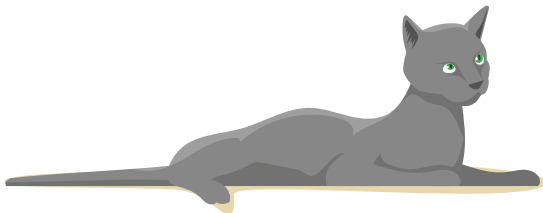
To sign up for ISU, follow the instructions in an email that you will receive early in September. Or you can just sign up by going to isu.ifmo.ru/reg

If you have any questions about the system, write to support@itmo.ru or use the feedback form.

Rise and shine – always in time★ for your classes!

You can always find your updated
class schedule in ISU
and on [ITMO International](#).

All you will need is to choose
your year and study group.
Planning your day
has never been so easy!



Check-up, check!

You can avail of the university-wide medical help at any of ITMO's medical centers:

- **Kronverksky Pr. 49, room 205 (2nd floor of the 2nd building)**

Monday-Friday, 9am-3pm
(812) 232-34-50.

- **Lomonosova St. 9, room 2213 (2nd floor of the 2nd building)**

Monday-Friday, 9am-3pm
(812) 315-09-14.

Services available include:

- urgent medical aid
- consultation from a general physician
- medical reference for your dormitory
- short-term (up to three days) sick leave from your classes
- vaccinations
- regular check-ups
- preclinical examinations
- referral for a specialized medical consultation

IMPORTANT!

You got sick and missed a class? Please, provide a document confirming that you were on sick leave. You have to bring this document to the university medical office and dean's office within two weeks after you resume your studies.



We've got your back, always: mental health support

ITMO University offers its students mental health support both in Russian and English languages. You can find our highly-qualified specialists at:

Medical, Psychological and Social Assistance Center

[Lomonosova St. 9](#), rooms 1409, 1411

(812) 572-12-30

sotsotdel2013@ya.ru

vk.com/public13760345

Clinical Psychology Service

psy.line.ITMO@ya.ru

+7 (911) 247-47-98

(Mon., Th., 8pm-10pm)

vk.com/id87863856

Consultations are provided
both face-to-face and
via Skype and email.



Student life – plenty of options to choose from!

ITMO University provides plenty of opportunities for you to stand out and show off your talents! Follow [ITMO.STUDENTS](#) on [VK](#) for more information.

If you feel like your calling is to help others, join ITMO University's [Volunteer Center](#). This team of young and enthusiastic students takes part in events both small and large, including the likes of World Festival of Youth and Students and FIFA World Cup.

Adapting to life in a new country can be difficult, which is why our [International Students' Council](#) is always there to help. We organize lots of wonderful events for international students: festivals of national cuisine and cultures, celebrations of national holidays, fun get-together events, parties and many more. International students can also join the Russian language speaking club if they wish to learn the language faster.

Want to learn more about the rich history and culture of St. Petersburg and Russia in general? Welcome to [ITMO.TRAVEL](#), a club that organizes excursions all over the north-west of Russia and the neighboring countries of Finland, Sweden, and Estonia. Held on weekends, these short getaways are a perfect way to relax and unwind while discovering new cities and cultures.

Sports – fitness meets fun!

This is ITMO University. There are no boring PE classes you need to muster all your willpower to drag yourself from your couch for to make the grade. What we have instead is KronBars, a fun and welcoming student sports club offering more than 60 kinds of sports for you to enjoy. From basketball and volleyball to rock-climbing, wrestling, and fencing, everyone is bound to find something that suits their taste.

All classes are divided into three levels:

Beginner level

These are classes open to all students regardless of their sports proficiency. Start learning basketball from scratch or take a shot at fencing or floorball – we'll help you reach your full sport's potential. All classes are held in the daytime.

Intermediate level

Intermediate level classes are available for a wide range of sports and imply regular and ongoing training. You'll need to have a good fitness level and know basic rules of your chosen sport in order to be admitted. This level can be your springboard to the university's sport teams reserve.

Classes take place in the evenings and on the weekends.

Professional level

The most able, experienced, and athletic are welcome to join the professional level classes where they will train to defend the university's honor as part of university team on national and international sports competitions. You'll need to have an excellent fitness level, undergo the selection process, be prepared for regular and rigorous training, and show willingness to always do your best in order to be admitted. Tryouts take place in September-October time.



How to enroll?

Just follow these five easy steps:

- log in your account on [ISU](#);
- click on [Physical Education and Sports](#);
- choose the Class Schedule tab;
- choose where to take your P.E. classes;
- choose (no more than two) days and times when you'd like to have classes.

Enrollment to all classes starts on September 1.

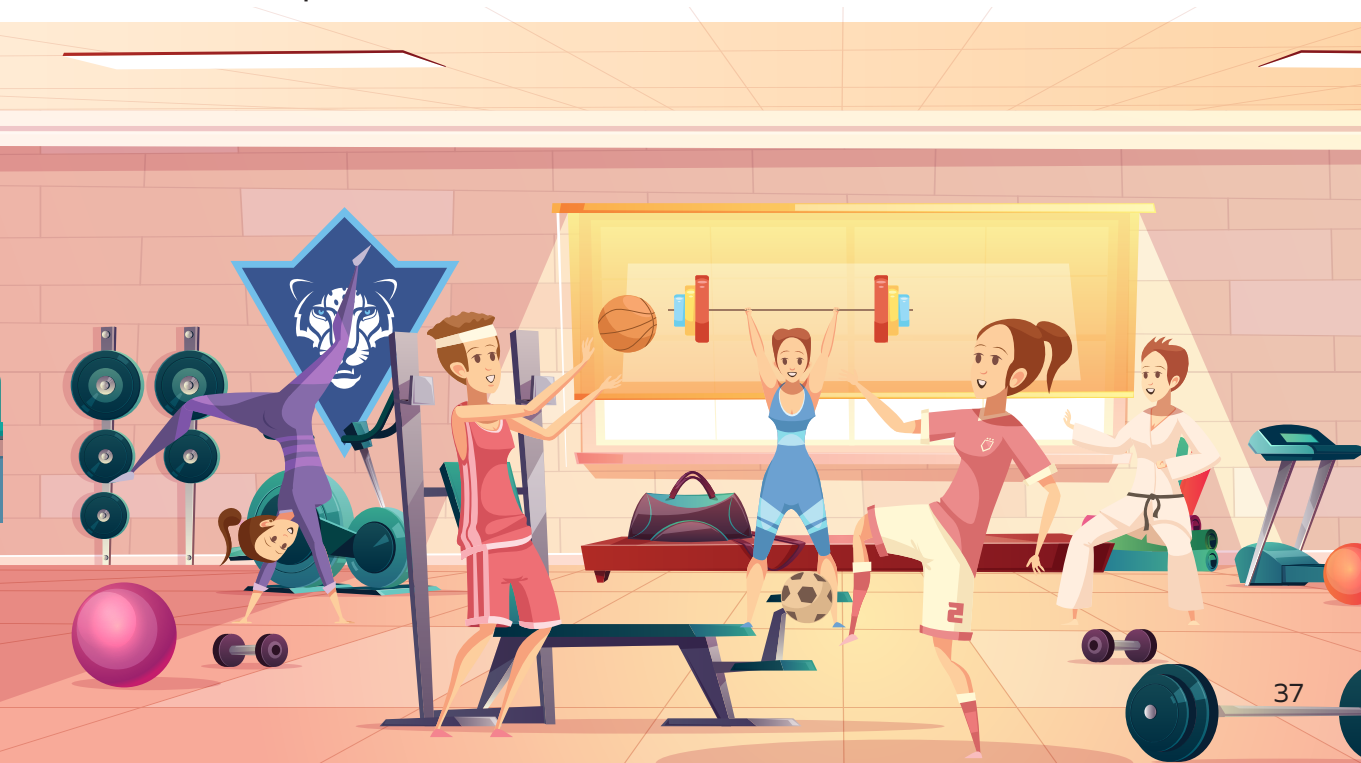
Don't forget to do a health check-up and get a medical permission for doing sports prior to enrolling.



The schedule for all sports classes can be found on the [official website of ITMO KronBars](#).

KronBars: more than it says on the tin!

But ITMO University's KronBars doesn't just mean dozens of cool sports classes; it is also St. Petersburg's best-known student sports club. Our team of sports managers, journalists, photographers and student enthusiasts are hard at work developing student sports and forming better conditions for athletes and everyone who likes sports.



By joining KronBars, you'll not only become a part of a friendly and open community of like-minded sports enthusiasts but also get an exclusive club card, which gives you the opportunity to:

- represent the university as part of its many sports teams: ultimate frisbee, basketball, volleyball, handball, futsal, swimming, rugby, football, hockey, gymnastics, cheerleading, and others;
- take part in the university and city-wide, national and international competitions and festivals;
- attend various sports classes, including boxing, badminton, biking, armwrestling, darts, billiards, skiing, rowing, karate, crossfit, track and field, table tennis, powerlifting, rock climbing, orienteering, hiking, fitness, chess, checkers and many others;
- participate in the fun KronBars members-only events;
- get free tickets to the Zenit basketball and football and SKA hockey teams' games;
- get discounts in the KronBars own shop and its many partner stores.

To become a member of the KronBars student sports club, fill out a form on kronbars.itmo.ru, pick up your member's card, and start enjoying all the perks it gives.

Got any questions?

Lomonosova St. 9, room 4401
(812) 575-69-05
mail@kronbars.ru

 kronbars.itmo.ru

 vk.com/kronbars

 instagram.com/kronbars

Startup it up with ITMO University!

At ITMO, entrepreneurship is as important as education and research. We champion innovative ideas and offer a well-developed and effective entrepreneurship infrastructure to help you bring your projects to fruition:

Entrepreneurship Center

- Market analysis
- Project development and fundraising
- Assistance with intellectual property protection
- Workshops, networking and other professional events

Birzhevaya Liniya 14, room 530
(812) 457-15-41
startup.ifmo.ru
startup@itmo.ru

Future Technologies

Business accelerator for hardware, hi-tech and IT projects providing support on all stages of development on an one-on-one basis

ft.ifmo.ru

SumIT

Intensive acceleration program for projects in the fields of IT, Internet, Mobile

sumitmo.ru

Technopark

- Platform for innovative project development and growth
- Internships
- Equipment support
- Expert evaluation of projects
- Test-runs of business ideas

Birzhevaya Liniya 14-16,
room 319
(812) 457-17-93
ob@itc.vuztc.ru

FabLab

- State-of-the-art equipment and project implementation support

fablab.ifmo.ru
vk.com/fablabitmo

Engineering Center

- Contract infrastructure for developing original solutions and conducting hypothesis test-runs for the industry
- Organization of internships for future engineers and entrepreneurs

Viktoria Zheltova
+7 921 950-79-65

Center for Project Development and Fundraising

- Funding and fundraising help and support

Birzhevaya Liniya 14-16,
room 328
(812) 457-18-06
igor.kuprienko@itmo.ru

Open Laboratory of Ideas, Methods and Practices (OLIMP)

Kronverksky Pr. 49, room 511

vk.com/olimp_union

- Providing the necessary knowledge and tools to implement your idea, project or concept



Simply mind-blowing: Museum of Optics

Optics is one of the main areas of specialization for ITMO University university, and has been for some time. Founded in 2006, ITMO University's [Museum of Optics](#) is Russia's first field-oriented university museum, which focuses on explaining the principles of science in an interactive format. It is all about the magic of light, from holograms and optoclones to optical illusions.

You'll familiarize yourself with numerous optical phenomena, learn to draw with light, control particles in space, and even fly!

Entrance is free for ITMO University students and staff (don't forget to take your student card with you).

Birzhevaya Liniya, 14

Tu.-Th. 11am-8pm

Fri.-Sun. 11am-9pm

Mon. closed



Yagodnoe: Back to nature

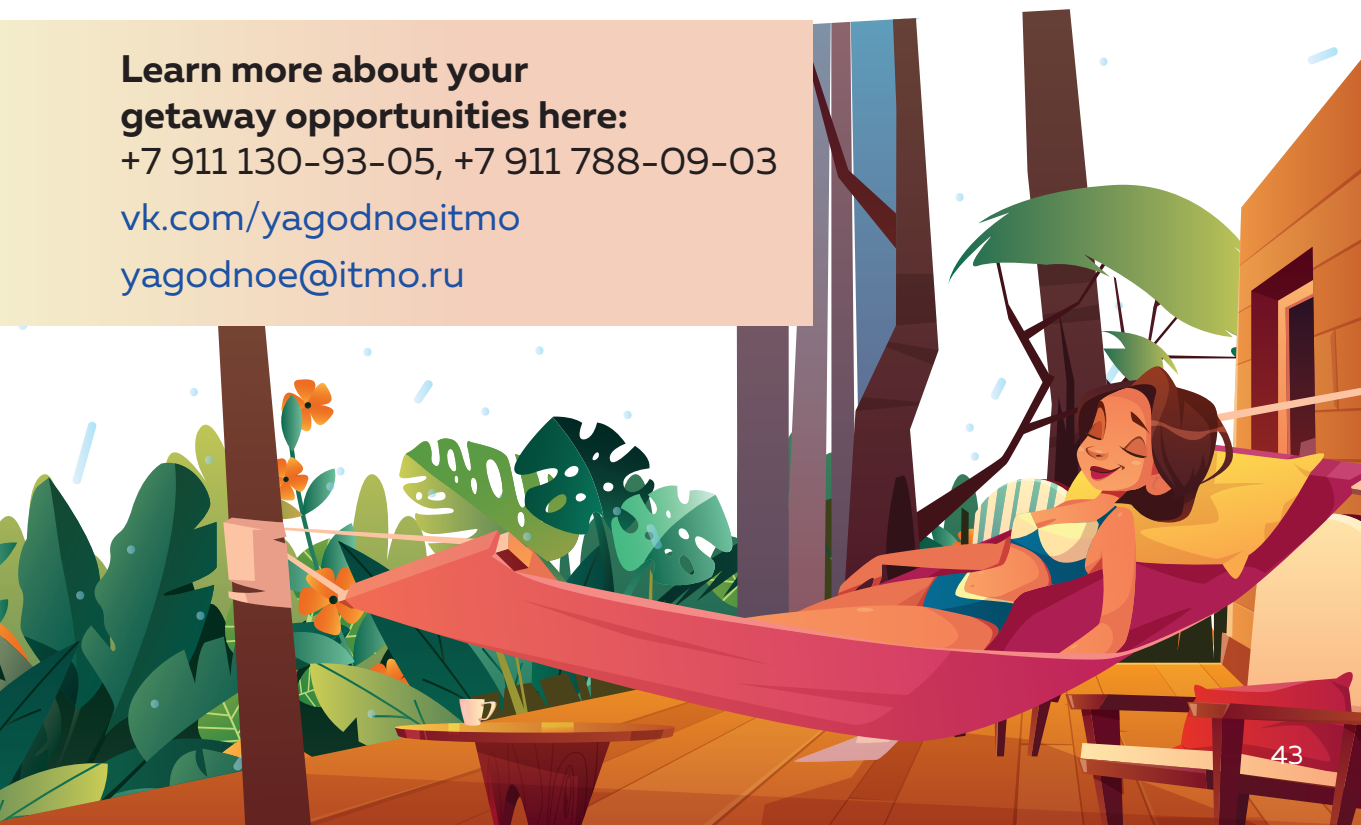
Want to take a break from your studies in the peace, calm and serenity of Russian nature? Make a beeline for ITMO's [Yagodnoe sports and recreation center](#), located in the vicinity of the picturesque Berestovo lake.

**Learn more about your
getaway opportunities here:**

+7 911 130-93-05, +7 911 788-09-03

vk.com/yagodnoeitmo

yagodnoe@itmo.ru



Careers: ready, set, launch!

ITMO University always puts your future success as a professional first. Our students have access to a variety of professional development centers and services that offer a wide range of services to help you with any challenges you may have and to propel you forward.

Careers Center

- Your springboard towards a successful career
- CV guidance, networking opportunities, career mentorship, job search help

Kronverksky Pr. 49, room 321
(812) 232-25-75

careers.itmo.ru
vk.com/careers_service
careers@itmo.ru

Personal Development Center

- Comprehensive personal development guidance and support

Tchaikovskogo St. 11/2,
room 217

+7 (931) 002-77-26
clr.ifmo.ru/en/
clr@itmo.ru

Science Communication Center

- Enabling an effective dialogue between the scientific community and the wider public
- Help with preparing scientific presentations, science popularization skills development and training, organization of research

Kronverksky Pr. 49, room 290

+7 (953) 377-55-08

scicomm@itmo.ru

vk.com/scicomm

facebook.com/scicommITMO/



Student Science Center

- Research work support
- Participation in conferences
- Application for grants

Kronverksky Pr. 49, room 309

+7 (812) 232-04-64

nirs@itmo.ru

Academic Writing Lab

- Development of academic writing skills
- Support with preparation of research papers, abstracts, presentations, grant proposals, application essays, resumes and cover letters

Lomonosova St. 9, room 3206

+7 (812) 572-21-58

awl@ifmo.ru

awl.ifmo.ru/en/

ITMO International

ITMO University is committed to providing a wide range of opportunities for international research and academic mobility for its students and staff:

- Semester exchanges
- Internships
- Professional development courses
- Scientific conferences
- Workshops and seminars
- Summer and winter schools
- Competitions and championships

ITMO University can offer administrative and financial support for your international academic and research experience.

Learn more on [ITMO International](#).



Stay in touch!

Enhance your student experience with all the exciting events happening at ITMO, read our fun articles at ITMO's English news website, follow updates on numerous grants, scholarships and academic mobility competitions – and tell us all about it!

We'd love to hear from you.

ITMO.NEWS
Events at ITMO University
ITMO International

 /spbifmo

 /itmoru

 /itmoru

 /SPbIFMO

ITMO.FAMILY

itmo.ru